



Who We Are

Ethicheck Ltd is a U.K. based company, who import and distribute hi-spec medical equipment manufactured specifically for our customers.

We specialise in products that are produced to a very high standard, and are supported by systems that allow everyone to have faith and trust in the products that are stored within them.

What We Do

Ethicheck is proud to distribute Matos® technology. Originally developed in Australia and New Zealand by Rollex Medical, who are the leading providers of refrigeration solutions to the medical sector in these countries with over 14 years’ experience in the field. Hospitals using the Matos® Fridge Rescue patented system have saved tens of thousands of pounds’ worth of stock.

We have a range of Refrigerators and Freezers available with our unique and patented Web Based MATOS Monitoring system, which as well as performing all your monitoring requirements, will alert you when temperatures go out of range (or potentially will go out of range). These alerts can be raised for: equipment temperature breaches, door open, power loss, and ambient room temps; so you, as the user, have time to respond before your product is damaged.

This unique monitoring system can, in the case of electronic controller failure, also take over control to keep the temperature within range, again saving your product whilst you remedy the problem.

Why Choose Us?

Ethicheck Ltd will help you procure the best cold-chain compliant medical fridge for your needs. We will look after you for the life of your fridge.

With Ethicheck Ltd, purchasing a fridge is the beginning of a long-lasting relationship.



INDEX

MATOS® PLUS 4

What is MATOS PLUS 5

MATOS PLUS-Eco 6

MATOS PLUS-Cloud 7

Matos® Monitoring 8

Matos® PLUS Refrigerators..... 10

Matos® PLUS Freezers 12

Matos® PLUS Fridge/Freezer Combo..... 14

Matos ARIA 15

Matos ARIA Eco Series 16

Matos ARIA Eco Refrigerators..... 17

MATOS PLUS RFID Refrigerators18

Temperature Solutions 20

MWM Kit..... 22

M-310-I 23

MATOS PLUS REFRIGERATOR AND FREEZER RANGE



What is the MATOS® PLUS Range?

The MATOS® PLUS is a new range of purpose built Medical, Laboratory & Vaccination Refrigerators, Freezers and Thermostatic Chambers utilising internationally patented technology. The cabinet and componentry have been specially designed for use in the Medical field.

Why choose MATOS® PLUS?

The MATOS® range of fridges and freezers are built to the highest specifications and feature fast cool-down, a sophisticated microprocessor controller with clear LCD display, an auto-diagnostic function and a unique fan control for better temperature maintenance. We also offer models with Hot Gas Defrost and Stainless Steel interiors.

What is MATOS PLUS-Eco and MATOS PLUS-Cloud?

The MATOS PLUS-Eco range is manufactured in Europe to meet the highest standards, are energy efficient, have built-in fan management, locks fitted as standard, automatic defrost and come with solid or glass door options.

The MATOS PLUS-Cloud is our premium range with the addition of our Data Acquisition & Transfer Module and Fridge Rescue System offering:

- **Built-In Monitoring**
Continuous temperature monitoring with email and optional sms alerts ensures a robust complete monitoring record of your product even with loss of power.
- **Thermostat Override**
The patented control system ensures that in the event of a component failure, our Fridge Rescue System steps in and will keep the fridge within the optimum temperature range.
- **Battery Backup**
Our MATOS PLUS-Cloud range include a smart, compact UPS built into the fridge so the temperature monitoring will continue during a power failure, ensuring an uninterrupted temperature log. (Backup time up to 36 hours). Automatic battery maintenance and smart-charging cycle ensures maximum battery life.



New Zealand: Patent 596323 | Australia: Patent 2012336431 | Europe: Patent 12846969.9

matos® PLUS Eco



The MATOS PLUS Eco series is a European-built range of purpose-built Medical and Vaccination Refrigerators, Freezers and Thermostatic Chambers. The cabinet and componentry have been specially designed for use in the Medical field.

Key Features include:

- Fast cool down
 - Sophisticated PID microprocessor controller with clear LCD display
 - Auto-diagnostic function
 - Automatic defrost
 - Unique fan control for better temperature maintenance
 - Access Port as standard
 - Door lock as standard
 - Internal LED light
 - Aluminium Interior as standard - creates a ballast affect inside the fridge chamber, assisting with temperature maintenance with door openings
 - Glass door option available on most models
 - Temperature and door open alarms
 - Other options include Hot Gas Defrost*, stainless steel interiors/housing, drawers and anti-microbial coatings
- plus...

Aluminium or Stainless Interior
Modern Refrigeration Technology

5 Year Extended Warranty

When serviced by an approved service technician, the warranty is extended to an industry leading 5 years - Parts Only.

*Hot Gas Defrost Function: Our hot gas defrost system works by diverting hot refrigerant gas, directly into the evaporator (cooling plate), which heats the ice directly from the inside out. The defrost cycle only runs for 30 seconds (standard) to a maximum of 2 minutes. At 30 seconds, the internal air temperature raises by only 1 degree approximately. This ensures the correct temperature is maintained within the chamber during the defrost cycle, whilst keeping the time between cooling cycles as short as possible.

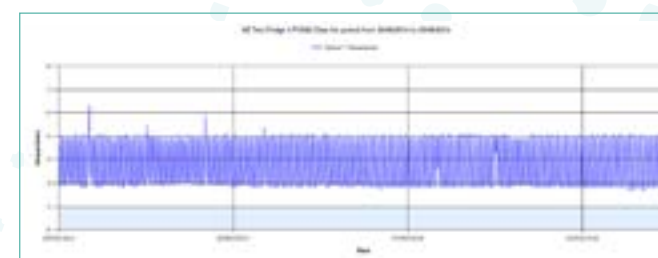
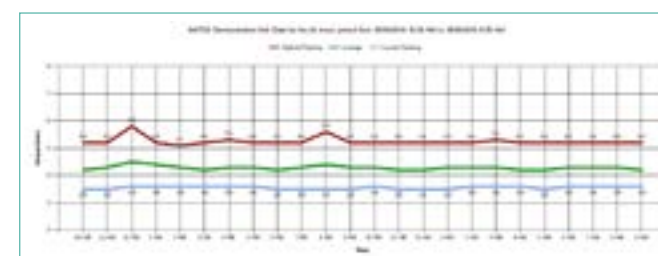
matos® PLUS Cloud



The MATOS PLUS-Cloud range includes all of the features of the Eco units, but with our unique, patented web monitoring and Fridge Rescue System.

Additional Features include:

- In the event of a fridge component failure (other than the compressor, which is very unlikely), the system will send an alert, bypass the fridge's own systems and automatically maintain temperature until an engineer can attend site and rectify the problem. This feature is unique to us, patented and has already saved thousands of pound's worth of product which would otherwise have been destroyed in hospitals in New Zealand and Australia, where the system originated.
- Unique secure website access for each client
- Temperature and door status constantly monitored
- Alerts sent via the website to designated users in the event of an alarm
- Alarms include temperature too high or low, door open, power loss and data communication lost
- Optional monitoring is available for simulated sample temperature and external ambient temperature
- The monitoring unit has its own UPS backup and will store data for up to 36 hours in the event of a power loss
- If internet connectivity is lost, the unit will store all the data and automatically upload when connectivity is re-established
- All data is stored on the secure website for access at any time for compliance purposes
- Users can set up automated reports by email
- Unlimited free email alerts are included in the service
- SMS alerts are available as a chargeable extra if required.



Matos® Monitoring is a web-based automatic temperature monitoring system, enabling direct access to your fridge temperatures and records, anywhere at any time.



Dedicated Server

Matos® Monitoring features a dedicated, off-site secure server ensuring fast access speeds when information is critical.

SMS and Email Alerting

Temperature excursions and status alarms are sent via email message and optional SMS message within seconds.

Ease of Access

Access fridge temperatures and statuses from any web-capable device such as a computer, smartphone or tablet.

Clear Concise Information

See temperature history and fridge status at a glance with easy to read colour coded indicators.

Full Alert History

Complete alert history makes audit trails a breeze. See who has responded and action taken with the click of a button.

Automatic and Custom Reports

Get reports delivered direct to your email inbox or create custom PDF reports for any period.

Wireless Capability

Internet connection via a wired network. Wireless (WIFI) or GSM Connectivity is also available at an additional cost.

Robust Database

Double backup and RAID system ensures data is kept safe and secure for 10 years plus.

Battery Backup

With smart compact UPS built into the fridge the temperature monitoring will continue during a power failure, ensuring an uninterrupted temperature log. (Backup time up to 36 hours).

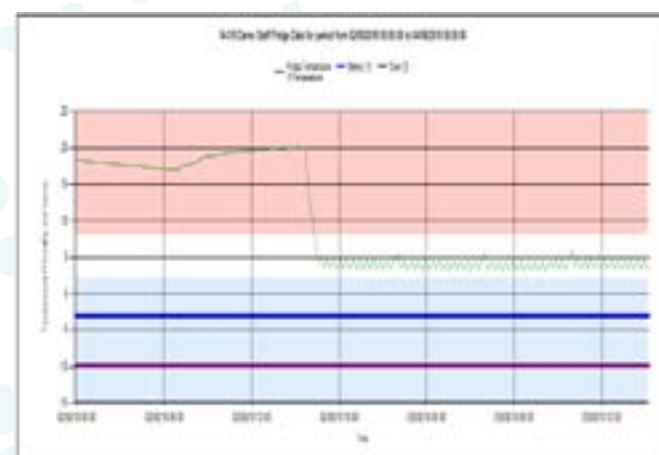
Automatic battery maintenance and smart-charging cycle ensures maximum battery life.

Outgoing Communication Only

As there are no incoming connections to the monitoring device the network security of your business is never compromised.

Self Reporting/Analysing

Self monitored device ensures that any hardware problems are reported to the user ensuring a quick response.



Cool...

- State of the art fridges keep your products in the correct temperature range
- Auto diagnostics
- Energy efficient units with rapid cool down and special fan management
- Automatic defrost, locks and a five year extended warranty all as standard
- Solid or glass doors
- Many other options...

Calm...

- Relax, your fridge is being monitored every minute of every day - automatically
- Medical staff do not have to check & record temperatures
- ANY problem with the fridge sends an automatic alert direct to a smartphone or PC so the problem can be dealt with before it is too late
- If the fridge fails*, the Matos® system takes over and safeguards the contents

& Collected

- All data is uploaded automatically to a secure website
- Data is never lost, even if the network connection or power are down
- Automatic reports and logs can be customised
- Full audit trail for regulatory compliance

Take a look at the Monitoring demonstration site - www.matosmonitoring.com using the following:
Username: matosdemo1 / Password: matosdemo1

New Zealand: Patent 596323 | Australia: Patent 2012336431 | Europe: Patent 12846969.9



PLUS REFRIGERATORS

The MATOS® PLUS Refrigerator series is a new range of purpose-built Medical & Vaccination Refrigerators utilising patented technology.



Specifications

| Standard features for all models | MATOS Plus-Eco 68 R MATOS Plus-Cloud 68 R | MATOS Plus-Eco 150 R MATOS Plus-Cloud 150 R | MATOS Plus-Eco 200 R MATOS Plus-Cloud 200 R | MATOS Plus-Eco 250 R MATOS Plus-Cloud 250 R | MATOS Plus-Eco 300 R MATOS Plus-Cloud 300 R |
|--------------------------------------|--|--|--|--|--|
| Description | On/Under-Bench | On/Under-Bench | Freestanding | Freestanding | Freestanding |
| Gross Capacity | 68L | 150L | 200L | 250L | 300L |
| Dimensions External | 570w x 830d x 600h | 620w x 800d x 860h | 620w x 800d x 1060h | 620w x 800d x 1260h | 620w x 800d x 1460h |
| Dimensions Internal | 470w x 300d x 430h | 520w x 420d x 660h | 520w x 420d x 860h | 520w x 420d x 1060h | 520w x 420d x 1260h |
| Max shelf workload | 10kg | 10kg | 10kg | 10kg | 10kg |
| Max unit workload | 20kg | 30kg | 40kg | 50kg | 60kg |
| Door | Solid/Glass option | Solid/Glass option | Solid/Glass option | Solid/Glass option | Solid/Glass option |
| Weight | 32kg | 54kg | 59kg | 69kg | 75kg |
| Shelves fit/max | 2/2 | 3/4 | 3/4 | 4/6 | 5/7 |
| Gas defrost | Optional | Optional | Optional | Optional | Optional |
| Door Style | Hinged | Hinged | Hinged | Hinged | Hinged |
| Door Open Sensor | Yes | Yes | Yes | Yes | Yes |
| Door Open Alarm | Yes | Yes | Yes | Yes | Yes |
| Lock | Yes | Yes | Yes | Yes | Yes |
| Castors | Optional | Optional | Optional | Yes | Yes |
| Air convection | Fan Forced Air | Fan Forced Air | Fan Forced Air | Fan Forced Air | Fan Forced Air |
| Controller | Microprocessor with LCD graphic display | Microprocessor with LCD graphic display | Microprocessor with LCD graphic display | Microprocessor with LCD graphic display | Microprocessor with LCD graphic display |
| Interior | Aluminium (s/steel optional) | Aluminium (s/steel optional) | Aluminium (s/steel optional) | Aluminium (s/steel optional) | Aluminium (s/steel optional) |
| Housing | Powder coated steel (s/steel optional) | Powder coated steel (s/steel optional) | Powder coated steel (s/steel optional) | Powder coated steel (s/steel optional) | Powder coated steel (s/steel optional) |
| Colour | White/Teal | White/Teal | White/Teal | White/Teal | White/Teal |
| Temperature Range | 0°C to +15°C | 0°C to +15°C | 0°C to +15°C | 0°C to +15°C | 0°C to +15°C |
| Temperature Resolution | 0.1°C | 0.1°C | 0.1°C | 0.1°C | 0.1°C |
| Temperature Fluctuation | +/- 0.5°C | +/- 0.5°C | +/- 0.5°C | +/- 0.5°C | +/- 0.5°C |
| Power | 160W | 170W | 170W | 330W | 330W |
| Access Port | Yes | Yes | Yes | Yes | Yes |
| Refrigerant Type | R1234 | R1234 | R1234 | R1234 | R1234 |
| Additional features for Cloud models | MATOS Plus-Cloud 68 R | MATOS Plus-Cloud 150 R | MATOS Plus-Cloud 200 R | MATOS Plus-Cloud 250 R | MATOS Plus-Cloud 300 R |
| Web monitoring | Yes | Yes | Yes | Yes | Yes |
| DAQ Backup Battery (x2) | 12V sealed lead acid (12V 3.5Ah) | 12V sealed lead acid (12V 3.5Ah) | 12V sealed lead acid (12V 3.5Ah) | 12V sealed lead acid (12V 3.5Ah) | 12V sealed lead acid (12V 3.5Ah) |
| LAN connection | RJ45 ethernet | RJ45 ethernet | RJ45 ethernet | RJ45 ethernet | RJ45 ethernet |

MATOS® Plus Refrigerators are also available in Tropical variants. The Standard versions are tested to run in ambient temperatures of 10°C to 28°C. The Tropical versions are tested to run in ambient temperatures of 10°C to 38°C.



| MATOS Plus-Eco 400 R MATOS Plus-Cloud 400 R | MATOS Plus-Eco 493 R MATOS Plus-Cloud 493 R | MATOS Plus-Eco 625 R MATOS Plus-Cloud 625 R | MATOS Plus-Eco 1365 R MATOS Plus-Cloud 1365 R | MATOS Plus-Eco 1460 R MATOS Plus-Cloud 1460 R |
|--|--|--|--|--|
| Freestanding | Freestanding | Freestanding | Freestanding | Freestanding |
| 400L | 493L | 625L | 1365L | 1460L |
| 620w x 800d x 1860h | 660w x 810d x 1990h | 750w x 860d x 1990h | 1480w x 860d x 1990h | 1450w x 950d x 1970h |
| 520w x 420d x 1660h | 510w x 640d x 1510h | 600w x 690d x 1510h | 1310w x 690d x 1510h | 1340w x 750d x 1460h |
| 10kg | 20kg | 30kg | 30kg | 30kg |
| 70kg | 100kg | 100kg | 100kg | 100kg |
| Solid/Glass option | Solid/Glass option | Solid/Glass option | Solid/Glass option | Solid/Glass option |
| 90kg | 105kg | 115kg | 185kg | 200kg |
| 6/10 | 6/11 | 6/11 | 2x6/11 | 2x6/11 |
| Optional | Optional | Optional | Optional | Optional |
| Hinged | Hinged | Hinged | Hinged | Hinged |
| Yes | Yes | Yes | Yes | Yes |
| Yes | Yes | Yes | Yes | Yes |
| Yes | Yes | Yes | Yes | Yes |
| Yes | Yes | Yes | Yes | Yes |
| Fan Forced Air | Fan Forced Air | Fan Forced Air | Fan Forced Air | Fan Forced Air |
| Microprocessor with LCD graphic display | Microprocessor with LCD graphic display | Microprocessor with LCD graphic display | Microprocessor with LCD graphic display | Microprocessor with LCD graphic display |
| Aluminium (s/steel optional) | Aluminium (s/steel optional) | Aluminium (s/steel optional) | Aluminium (s/steel optional) | Aluminium (s/steel optional) |
| Powder coated steel (s/steel optional) | Powder coated steel (s/steel optional) | Powder coated steel (s/steel optional) | Powder coated steel (s/steel optional) | Powder coated steel (s/steel optional) |
| White/Teal | White | White | White | White |
| 0°C to +15°C | 0°C to +15°C | 0°C to +15°C | 0°C to +15°C | 0°C to +15°C |
| 0.1°C | 0.1°C | 0.1°C | 0.1°C | 0.1°C |
| +/- 0.5°C | +/- 0.5°C | +/- 0.5°C | +/- 0.5°C | +/- 0.5°C |
| 330W | 400W | 400W | 550W | 550W |
| Yes | Yes | Yes | Yes | Yes |
| R1234 | R290 | R290 | R290 | R290 |
| MATOS Plus-Cloud 400 R | MATOS Plus-Cloud 493 R | MATOS Plus-Cloud 625 R | MATOS Plus-Cloud 1365 R | MATOS Plus-Cloud 1460 R |
| Yes | Yes | Yes | Yes | Yes |
| 12V sealed lead acid (12V 3.5Ah) | 12V sealed lead acid (12V 3.5Ah) | 12V sealed lead acid (12V 3.5Ah) | 12V sealed lead acid (12V 3.5Ah) | 12V sealed lead acid (12V 3.5Ah) |
| RJ45 ethernet | RJ45 ethernet | RJ45 ethernet | RJ45 ethernet | RJ45 ethernet |

MATOS® Plus Refrigerators are available with a Passive Defrost function or with the Hot Gas Defrost Function. Our hot gas defrost system works by diverting hot refrigerant gas, directly into the evaporator (cooling plate), which heats the ice directly from the inside out. The defrost cycle only runs for 30 seconds (standard) to a maximum of 2 minutes. At 30 seconds, the internal air temperature raises by only 1 degree approximatley. This ensures the correct temperature is maintained within the chamber during the defrost cycle, whilst keeping the time between cooling cycles as short as possible.



PLUS FREEZERS

The MATOS® PLUS Freezer series can provide long-term storage of samples and biological material for research and storage of easily perishable material.



Specifications

| Standard features for all models | MATOS Plus-Eco 85 F MATOS Plus-Cloud 85 F | MATOS Plus-Eco 125 F MATOS Plus-Cloud 125 F | MATOS Plus-Eco 200 F MATOS Plus-Cloud 200 F | MATOS Plus-Eco 300 F MATOS Plus-Cloud 300 F |
|--------------------------------------|--|--|--|--|
| Description | Under-Bench | Freestanding | Freestanding | Freestanding |
| Capacity | 85L | 125L | 200L | 300L |
| Dimensions External | 610w x 650d x 880h | 660w x 800d x 1190h | 760 x 800d x 1380h | 760w x 800d x 1730h |
| Dimensions Internal | 420w x 400d x 590h | 420w x 520d x 600h | 520w x 520d x 770h | 520w x 520d x 1120h |
| Max shelf workload | 10kg | 10kg | 10kg | 10kg |
| Max unit workload | 30kg | 50kg | 65kg | 80kg |
| Weight | 60kg | 90kg | 120kg | 185kg |
| Shelves fit/max | 2/4 | 2/3 | 2/4 | 3/6 |
| Door | Solid | Solid | Solid | Solid |
| Door Style | Hinged | Hinged | Hinged | Hinged |
| Door Open Alarm | Yes | Yes | Yes | Yes |
| Lock | Yes | Yes | Yes | Yes |
| Air Convection | Natural | Natural | Natural | Natural |
| Controller | Microprocessor with LCD graphic display | Microprocessor with LCD graphic display | Microprocessor with LCD graphic display | Microprocessor with LCD graphic display |
| Interior | Stainless Steel | Stainless Steel | Stainless Steel | Stainless Steel |
| Housing | Powder coated steel (s/steel optional) | Powder coated steel (s/steel optional) | Powder coated steel (s/steel optional) | Powder coated steel (s/steel optional) |
| Colour | White/Grey | Grey | Grey | Grey |
| Temperature Range | -25°C to 0°C | -35°C to 0°C | -40°C to 0°C | -40°C to 0°C |
| Temperature Accuracy | 1°C | 1°C | 1°C | 1°C |
| Temperature Resolution | 0.1°C | 0.1°C | 0.1°C | 0.1°C |
| Power (W) | 200W | 450W | 470W | 470W |
| Access Port | Yes | Yes | Yes | Yes |
| Refrigerant Type | R455 | R290 | R290 | R290 |
| Additional features for Cloud models | MATOS Plus-Cloud 85 F | MATOS Plus-Cloud 125 F | MATOS Plus-Cloud 200 F | MATOS Plus-Cloud 300 F |
| Web monitoring | Yes | Yes | Yes | Yes |
| DAQ Backup Battery (x2) | 12V sealed lead acid (12V 3.5Ah) | 12V sealed lead acid (12V 3.5Ah) | 12V sealed lead acid (12V 3.5Ah) | 12V sealed lead acid (12V 3.5Ah) |
| LAN connection | RJ45 ethernet | RJ45 ethernet | RJ45 ethernet | RJ45 ethernet |

MATOS® Plus Freezers operate on a Manual Defrost function.

The MATOS® PLUS Freezer range now includes fan forced and ultra-cold models



Specifications

| Standard features for all models | MATOS® Eco 200 FF MATOS® Cloud 200 FF | MATOS® Eco 300 FF MATOS® Cloud 300 FF | MATOS® Eco 200 UF MATOS® Cloud 200 UF | MATOS® Eco 300 UF MATOS® Cloud 300 UF |
|--------------------------------------|--|--|--|--|
| Description | Freestanding, Fan Forced | Freestanding, Fan Forced | Freestanding, Ultra Cold | Freestanding, Ultra Cold |
| Capacity | 200L | 300L | 200L | 300L |
| Dimensions External | 760 x 800d x 1380h | 760w x 800d x 1730h | 850 x 950d x 1620h | 850w x 950d x 1910h |
| Dimensions Internal | 520w x 520d x 770h | 520w x 520d x 1120h | 520w x 550d x 830h | 520w x 550d x 1140h |
| Max shelf workload | - | - | 10kg | 10kg |
| Max unit workload | 160kg | 160kg | 65kg | 80kg |
| Weight | 120kg | 185kg | 180kg | 200kg |
| Shelves fit/max | 2/4 | 3/6 | 3 Chambers | 4 Chambers |
| Door | Solid | Solid | Solid | Solid |
| Door Style | Hinged | Hinged | Hinged | Hinged |
| Door Open Alarm | Yes | Yes | Yes | Yes |
| Lock | Yes | Yes | Yes | Yes |
| Air Convection | Fan Forced | Fan Forced | Natural | Natural |
| Controller | Microprocessor with LCD graphic display | Microprocessor with LCD graphic display | Microprocessor with LCD graphic display | Microprocessor with LCD graphic display |
| Interior | Stainless Steel | Stainless Steel | Stainless Steel | Stainless Steel |
| Housing | Powder coated steel (s/steel optional) | Powder coated steel (s/steel optional) | Powder coated steel (s/steel optional) | Powder coated steel (s/steel optional) |
| Colour | Grey | Grey | Grey | Grey |
| Temperature Range | -40°C to 0°C | -40°C to 0°C | -86°C to -40°C | -86°C to -40°C |
| Temperature Accuracy | 1°C | 1°C | 1°C | 1°C |
| Temperature Resolution | 0.1°C | 0.1°C | 0.1°C | 0.1°C |
| Power (W) | 500W | 500W | 670W | 670W |
| Access Port | Yes | Yes | Yes | Yes |
| Refrigerant Type | R290 | R290 | R290 | R290 |
| Additional features for Cloud models | MATOS® Cloud 200 FF | MATOS® Cloud 300 FF | MATOS® Cloud 200 UF | MATOS® Cloud 300 UF |
| Web monitoring | Yes | Yes | Yes | Yes |
| DAQ Backup Battery (x2) | 12v sealed lead acid (12v 3.5ah) | 12v sealed lead acid (12v 3.5ah) | 12v sealed lead acid (12v 3.5ah) | 12v sealed lead acid (12v 3.5ah) |
| LAN connection | RJ45 ethernet | RJ45 ethernet | RJ45 ethernet | RJ45 ethernet |

PLUS FRIDGE/FREEZER COMBO

The MATOS® PLUS Combo refrigerator/freezer combines our two most popular models into one easy to access unit.

Specifications

| Standard features for all models | MATOS Plus-Eco 150 CR / 85 CF MATOS Plus-Cloud 150 CR / 85 CF |
|--------------------------------------|--|
| Description | Freestanding |
| Gross Capacity | Fridge: 150L / Freezer: 85L |
| Dimensions External | 620w x 650d x 1745h |
| Dimensions Internal | Fridge: 520w x 420d x 660h Freezer: 420w x 400d x 590h |
| Max shelf workload | 10kg |
| Max unit workload | 30kg |
| Doors | Glass/Solid or Solid/Solid |
| Weight | 108kg |
| Shelves fit/max | Fridge: 3/4 / Freezer: 2/4 |
| Door Style | Hinged |
| Door Open Alarm | Yes |
| Lock | Yes |
| Air Convection | Fridge: Forced Air Freezer: Natural |
| Controller | Microprocessor with LCD graphic display |
| Interior | Fridge: Aluminium Freezer: Stainless Steel |
| Housing | Powder coated steel (s/steel optional) |
| Colour | White/Teal |
| Temperature Range | Fridge: 0°C – +15°C Freezer: -25°C – 0°C |
| Temperature Accuracy | 1°C |
| Temperature Fluctuation | Fridge at 4°C: +/- 0.5°C Freezer at -10°C: +/- 0.4°C |
| Power | 170W / 200W |
| Access Port | Yes |
| Refrigerant Type | R134A / R404A |
| Additional features for Cloud models | MATOS Plus-Cloud 150 CR / 85 CF |
| Web monitoring | Yes |
| DAQ Backup Battery (x2) | 12V sealed lead acid (12V 3.5Ah) |
| LAN connection | RJ45 ethernet |



Options Available:
Fridge: Glass Door, Hot Gas Defrost, Tropical, Stainless Steel Interior. Freezer: Tropical

MATOS® Plus Refrigerator has an Automatic Defrost Function.
MATOS® Plus Freezer has a Manual Defrost Function.

MATOS® Plus Combo Unit comes with separate compressors and controllers for the Refrigerator and Freezer; so no single unit failure would shut down the operation of the entire Combo unit.

MATOS ARIA ECO RANGE



The Matos® ARIA Eco series are a new range of cost-effective European-built Medical and Vaccination Refrigerators featuring the latest technology in controllers and compressors for accurate temperature stability.

Key Features include:

- Fast cool down
- Featuring the Carel soft touch controller - with min/max readings at the touch of a button
- Automatic defrost
- Unique fan control for better temperature maintenance
- Auxiliary Alarm Contacts as standard
- Door lock as standard
- Internal LED light
- Glass door option available on all models
- Temperature and door open alarms
- plus...

5 Year Extended Warranty

The warranty is extended to 5 years - Parts Only, subject to Terms and Conditions.

Why choose MATOS® ARIA?

The MATOS® ARIA range of fridges feature the latest technology in controllers and a reliable, powerful compressor that ensures your fridge remains in the ideal temperature range.

All MATOS® ARIA fridges prior to sale go through a robust full Cold Chain Quality Control Calibration Test by our in-house Technicians so all customers receive a Quality Control Certificate and Temperature Spatial results for every fridge.



Specifications

| Standard features for all models | MATOS® ARIA Eco 150 R | MATOS® ARIA Eco 220 R | MATOS® ARIA Eco 300 R | MATOS® ARIA Eco 374 R |
|----------------------------------|--|--|--|--|
| Description | On/Under-Bench | Freestanding | Freestanding | Freestanding |
| Gross Capacity | 150L | 227L | 290L | 372L |
| Dimensions External | 595w x 680d x 840h | 597w x 645d x 1370h | 597w x 645d x 1700h | 597w x 645d x 1896h |
| Dimensions Internal | 505w x 475d x 690h | 505w x 462d x 1025h | 505w x 462d x 1355h | 505w x 462d x 1555h |
| Door | Solid/Glass option | Solid/Glass option | Solid/Glass option | Solid/Glass option |
| Weight | Solid 48 kg / Glass 54kg | Solid 58kg / Glass 65kg | Solid 65kg / Glass 74kg | Solid 70kg / Glass 80kg |
| Shelves fit/max | 3 | 5/6 | 6/7 | 6/8 |
| Door Style | Hinged | Hinged | Hinged | Hinged |
| Door Open Sensor | Yes | Yes | Yes | Yes |
| Door Open Alarm | Yes | Yes | Yes | Yes |
| Lock | Yes | Yes | Yes | Yes |
| Castors | 2 wheels rear, 2 adjustable feet | 2 wheels rear, 2 adjustable feet | 2 wheels rear, 2 adjustable feet | 2 wheels rear, 2 adjustable feet |
| Air convection | Fan Forced Air | Fan Forced Air | Fan Forced Air | Fan Forced Air |
| Controller | Microprocessor with external LCD graphic display | Microprocessor with external LCD graphic display | Microprocessor with external LCD graphic display | Microprocessor with external LCD graphic display |
| Interior | HIPS (High Impact Polystyrene) | HIPS (High Impact Polystyrene) | HIPS (High Impact Polystyrene) | HIPS (High Impact Polystyrene) |
| Housing | Powder coated steel | Powder coated steel | Powder coated steel | Powder coated steel |
| Colour | White/Teal | White/Teal | White/Teal | White/Teal |
| Temperature Range | 2°C to +8°C | 1°C to +10°C | 1°C to +10°C | 1°C to +10°C |
| Temperature Resolution | 0.1°C | 0.1°C | 0.1°C | 0.1°C |
| Temperature Fluctuation | +/- 0.5°C | +/- 0.5°C | +/- 0.5°C | +/- 0.5°C |
| Power | Solid 1.32 kW Glass 1.4kW 24 hours | Solid 270W Glass 350W 24 hours | Solid 290W Glass 360W 24 hours | Solid 430W Glass 480W 24 hours |
| Auxiliary External Contact | Yes | Yes | Yes | Yes |
| Refrigerant Type | R600A | R134A / R600A | R134A / R600A | R134A / R600A |
| Refrigerant Type | R600A | R134A or R600A | R134A or R600A | R134A or R600A |

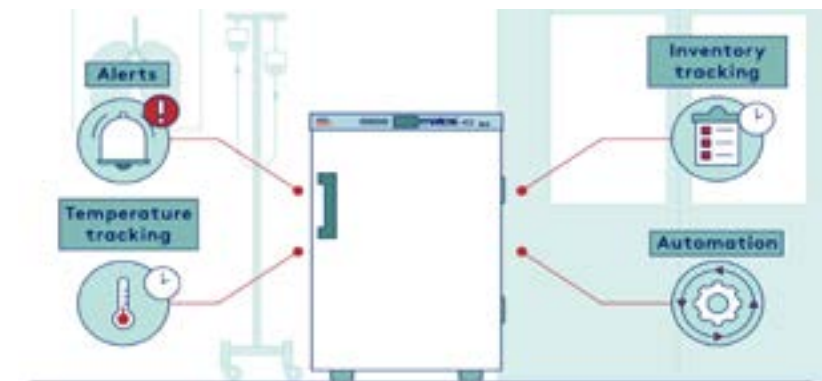
MATOS® PLUS RFID PHARMACEUTICAL REFRIGERATORS



MATOS® PLUS RFID REFRIGERATOR RANGE

Ethicheck proudly introduces our new exclusive MATOS® Real Time Inventory and Temperature Monitoring RFID Cloud Refrigerator Range.

The MATOS® Cloud RFID system is an Inventory management solution, installed within the tested & proven MATOS® Cloud Pharmaceutical Refrigerators. It utilises the MATOS® Monitoring Cloud Platform to provide live inventory status information; detailing exactly what products are located in a fridge cabinet, product expiry information and re-order levels at all times. Each Refrigerator is linked directly to the comprehensive MATOS® Monitoring Real Time Temperature monitoring platform, ensuring that all critical temperature and product status information is always available.



MATOS® RFID Refrigerators are available in a range of models from an Under Bench 150L to a Freestanding 625L Refrigerator. Available for use in any Hospital, Pharmacy, Clinical Laboratory or local Doctor Surgery our MATOS Refrigeration range is manufactured in Europe with only the latest technology in Refrigeration being utilised to ensure you can have confidence in the asset you are purchasing.

The MATOS RFID Pharmaceutical Refrigeration range is your fully automated, in-built solution for all your Inventory and Temperature Monitoring requirements.

Benefits of the RFID Pharmaceutical Refrigerator:

- Monitor stock levels 24/7
- Monitor stock rotation- reducing wastage
- Be provided with data to assist with forecasting
- Daily, Weekly, Monthly Automatic Inventory / Temperature Reporting
- Reduces Human Interaction with the removal of manual stocktakes and downloading temperature dataloggers
- Product recalls are easily managed
- Ensure stock is legitimate and untampered from the point of manufacture
- Robust audit history with Data Management / Protection (conforms to FDA CFR Chapter 21, pt. 11 regulations)
- Receive Alerts when stock is running low and about to expire
- Live Dashboard Interface available on any web capable device so is accessible anywhere in the world
- Along with full 24/7 Temperature monitoring, SMS/Email Alerts and Cold Chain Reporting to ensure your stock is being kept at the required temperature range

With our MATOS® RFID Refrigerators there is **NO SOFTWARE** as the entire platform is web based and backed up using the Azure Cloud platform.

MATOS® MONITORING SOLUTIONS

MATOS® Monitoring is a web based, automatic temperature monitoring system, enabling direct access to your fridge / freezer temperatures and records anywhere, at any time.



MATOS® Monitoring Technology can also be utilised in many other monitoring applications

Temperature | Gas or particle levels
Oxygen / CO2 levels | Pressure | Humidity
Ultra Low Temperature | Glycol



Take a look at the Monitoring demonstration site - www.matosmonitoring.com using the following:
Username: matosdemo1 / Password: matosdemo1

New Zealand: Patent 596323 | Australia: Patent 2012336431 | Europe: Patent 12846969.9

TEMPERATURE MONITORING SOLUTIONS





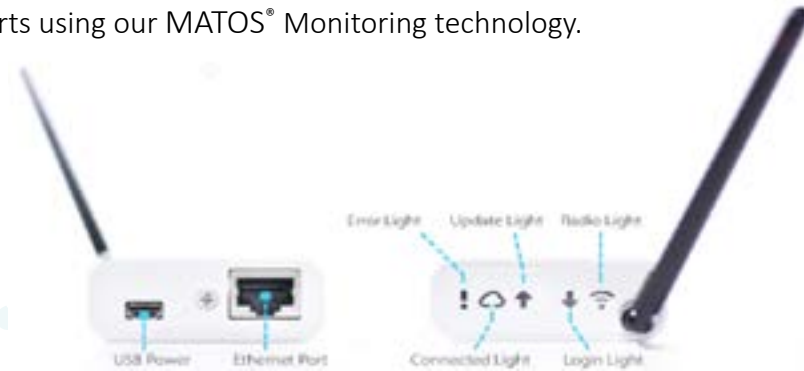
MATOS® WIRELESS MONITORING KIT (MWM)

Ethicheck proudly introduces our new exclusive Wireless Monitoring Kit (MWM) which can be retrofitted to any Refrigerator, Freezer, Cool-Room or Airspace in seconds.

This addition to the MATOS® Monitoring product range provides you with an easy to install solution with no technical expertise required while still providing you with the proven temperature monitoring system of choice using our MATOS® technology.

How does the System Work?

Place the sensor tile anywhere inside your Refrigerator where you wish to monitor the temperature. The Sensor transmits the data to the Base Station wirelessly. The Base Station is connected to the Internet using an Ethernet cable and will pick up all transmitted data from the tile and upload it to our MATOS® Monitoring Azure Server. You then have access to your full temperature records online, automatic reporting and SMS/Email alerts using our MATOS® Monitoring technology.



Providing the premium MATOS® Monitoring technology in a compact, easy to install solution:

- Fully automatic online monitoring
- Requires an internet connection
- Sensors can be mounted straight onto any surface with easy adhesive strip
- Infinitely expandable
- Instant user alerts upon temperature breach
- Replaceable battery which lasts up to 18 months
- 30 days internal memory
- Cloud storage integrity guaranteed for at least ten years
- NZ, Australian & FCC Compliance
- Enjoy the range of MATOS Monitoring Features without an invasive installation
- Powerful yet simple reporting system
- Compatible with any existing MATOS Monitoring System products
- Up to **40 Wireless Sensors** can be connected to a SINGLE Ethernet Base Station Receiver Unit!*

**Effective radio communication distance is 210m line of sight.*

Standard MATOS® Monitoring terms and conditions apply. Extra charges may be applicable for excess sms alerts.



M-310-I

MATOS® Monitoring can now be retrofitted to any fridge, freezer, cool-room or airspace. This can be achieved with the use of our new MATOS®

stand-alone monitoring unit.

ed and built in New Zealand, the

is a robust, secure monitoring

it is wifi and cellular compatible

our monitoring environments.



MATOS® M-310-I is a standalone monitoring unit that is quick and easy to install and provides most of the premium MATOS® Monitoring features in a compact, robust enclosure:

- Fully automatic, online monitoring – www.matosmonitoring.com
- Requires internet connection (wifi & cellular options available)
- Wall mount or benchtop monitoring unit
- Supports up to 4 digital temperature sensors/probes
- Supports 2 digital inputs (I/O) e.g. monitor power or door status
- Variable probe lengths and configurations available
- 36 hour Battery Backup with instant power switching
- 30 days internal log memory
- Cloud storage data integrity guaranteed for at least 10 years
- CE compliant.

Standard MATOS® Monitoring terms and conditions apply.

Extra charges may be applicable for excess sms alerts.

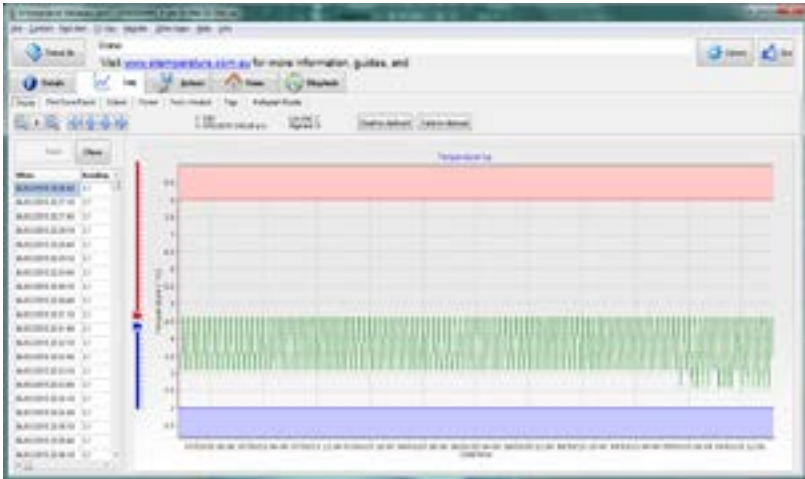
Automatically record the temperature in your vaccine fridge 24 hours/7 days a week.

Features

- Quick and easy to use
- View results as a graph with zoom capabilities
- View results as a table with a Microsoft Excel export
- Free upgrades
- Reliable – readings cannot be manually changed

Benefits

- Saves time by eliminating daily recording of temperatures
- Saves money by providing a detailed history when deciding if goods should be discarded after an incident
- Saves stress because you know everything is fine
- Saves your reputation by proving everything is good, or quickly identifying problems



Storing vaccines

Vaccines must be stored between 2°C and 8°C.

Vaccine fridges have a number of extra features to ensure that this occurs. These features include microprocessor control, fan forced cooling, temperature display and audible alarms.

What is a temperature logger?

A temperature logger will automatically record the date, time and temperature and store it in memory. These results can then be downloaded to a computer for viewing, saving and analysis.

Temperature loggers are ideal for monitoring the transport and storage of temperature sensitive products such as vaccines, medicine, and pathology samples. They can also monitor processes such as freezing, washing, sterilising, and incubating.

After a disaster

You return to the pharmacy after a public holiday. The fridge is reporting an alarm. Do you keep the stock or

With a temperature logger you know when the problem happened, for how long, and how hot/cold the vaccines became. These are the critical pieces of information required in deciding whether to keep or dispose of stock.

So you can be trading immediately, or you can be disposing of stock that is compromised. But you won't be throwing out good stock, or selling bad.

When being audited

An independent, 24 hours a day/7 days a week log of your vaccine fridge is the best way to prove that your vaccines were always stored at the correct temperature.

What is Rollog?

Rollog is an easy to use programme that helps you setup a temperature logger and to view the results. To start a logger you plug it into the computer and use Rollog to set the sample rate (how often you want it to store the temperature), when to start, and what to do once the memory is full (stop or overwrite the oldest reading).

And now what?

Once you have uploaded the readings from the logger there are many tools to make the most of the data such as:

- A graph and table display
- A range of reports to print out
- Export results to the clipboard, Microsoft Excel, Microsoft Word, csv files, graphical files
- Save results for later use
- Email results to others

A picture is worth...

For Rollog, a graph is worth thousands of readings. See weeks or months' worth of data at a glance. Zoom in on a section. Move it about.

But there is even more. Colour coding to highlight when it was outside the acceptable range. A cursor to show you the date and temperature. Click on a point to find it in the table. Copy it to the clipboard to paste into a report. It is all so easy.

Reports and more reports

eTemperature easily prints (or saves as pdf) reports that can include the graph, the settings, the readings, and daily min/max.

The "min/max + exceptions" report displays the daily min/max but also lists every reading that was in alarm. So you get details on what you need and a summary for the rest.

With a choice of logger

Rollog works with a wide range of temperature loggers including the TC, TCS, TCZ and the humidity logger HC.

| Feature | |
|---|---|
| Display results as graph | ✓ |
| Graph zooming and panning | ✓ |
| Colour coded graph | ✓ |
| Copy graph to clipboard | ✓ |
| Multiple logs on one graph | ✓ |
| Annotations on graph | ✓ |
| Display results as table | ✓ |
| Export to Excel, CSV, Word, Clipboard | ✓ |
| Delete to beginning or to end for data clean-up | ✓ |
| Save to file for later recall | ✓ |
| Data analysis including min, max, range, ice-days | ✓ |
| Min, max, range, ice-days | ✓ |
| Interval selection | ✓ |
| Configurable reports | ✓ |
| Include graph | ✓ |
| Daily min/max | ✓ |
| Daily min/max + alarm points | ✓ |
| All readings | ✓ |
| Save as pdf, html, or image | ✓ |
| Email results | ✓ |
| Flexible configuration | ✓ |
| Unit description | ✓ |
| Option to store customised data with logger | ✓ |
| Sample rate and display when data will be full | ✓ |
| Start delay by fixed date/time, or relative time | ✓ |
| High, low alarms | ✓ |
| Allow rollover when data is full or stop logging | ✓ |
| "Fast start" buttons for instant settings | ✓ |
| Configurable "fast start" buttons | ✓ |
| Temperature units: °C / °F | ✓ |
| User defined date format | ✓ |
| Automatic calibration and compensation (depending upon logger) | ✓ |
| Calibration result at time on manufacture certificate (depending upon logger) | ✓ |
| Security features. Optional password access to configuration, setting, and results | ✓ |
| Windows 2000, XP, Vista and 7 | ✓ |
| All features available in one programme. No extra cost to have "Full" or "Pro" versions | ✓ |




Medical Refrigeration and Monitoring

ETHICHECK LTD
Suite LP41835
20 - 22 Wenlock Road
London N1 7GU
United Kingdom

Tel (UK): +44 (0)1372 236455

Email: info@ethicheck.eu

 [@fridgerescue](https://twitter.com/fridgerescue)

www.ethicheck.eu

